

# PC200W version 4.0

## Starter Software



Campbell Scientific's PC200W software is a simple tool that supports direct communications between a computer and a datalogger. This software is compatible with all of our contemporary dataloggers, all of our datalogger operating systems (e.g., -MA, -TD, -PB), and many retired dataloggers (e.g., CR510, CR10X, 21X, CR23X).

### Communications<sup>1</sup>

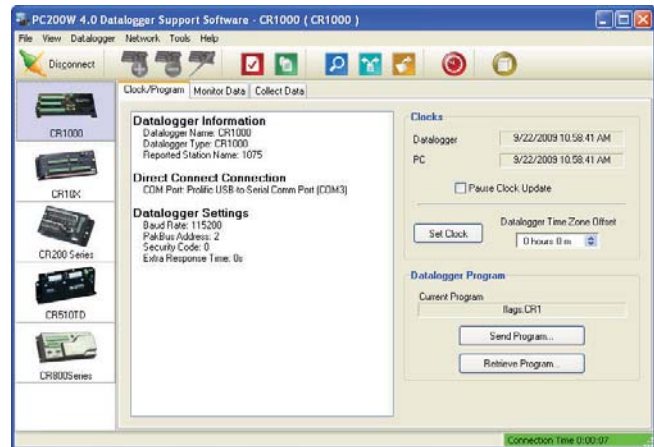
- PC200W allows you to:
  - Send programs to the dataloggers
  - Collect data
  - Set the datalogger clock
  - Access a terminal emulation mode
  - Display real-time measurements

### Data Processing and Display

PC200W collects and stores data in comma separated files on your PC. It includes a View program that displays data files in tabular or graphical form. For mixed-array dataloggers, a simple Split program is included that separates arrays in a data file into separate files.

### Card Convert

CardConvert is used to convert and save binary data from a PC Card or CompactFlash® card. Our CR5000 and CR9000X dataloggers store data on a PC Card via their on-board PCMCIA card slot, and store data on a CompactFlash card via the CF1 CompactFlash Adapter. Our CR1000 and CR3000 dataloggers store data on a CompactFlash card via the CFM100 CompactFlash Module or NL115 Ethernet Interface and CompactFlash Module.



PC200W was designed expressly for the beginning user so a manual is not necessary. Context-sensitive help is available throughout the program by pressing F1.

### Datalogger Programming

PC200W includes Short Cut<sup>2</sup> for creating simple datalogger programs. Programs created with the CRBasic Editor<sup>3</sup> or Edlog<sup>4</sup> can be sent to the datalogger using PC200W.

### Installation

PC200W can be downloaded, at no charge, from [www.campbellsci.com/downloads](http://www.campbellsci.com/downloads) and is provided on our Resource CD.

### Requirements

- Windows 2000, XP, or Vista

<sup>1</sup>PC200W only supports direct communications. Telemetry requires either LoggerNet or PC400 Datalogger Support Software. LoggerNet also supports scheduled data collection. For more information, contact a Campbell Scientific applications engineer.

<sup>2</sup>Short Cut Program Generator can also be downloaded, at no charge, from [www.campbellsci.com/downloads](http://www.campbellsci.com/downloads) and is provided on our Resource CD.

<sup>3</sup>CRBasic is a program editor included in LoggerNet and PC400 Datalogger Support Software.

<sup>4</sup>Edlog is a program editor included in LoggerNet and PC400 Datalogger Support Software.

## Limited Warranty

Campbell Scientific, Inc., does not warrant that the software will meet licensee's requirements or that the software or documentation are error free or that the operation of the software will be uninterrupted. Campbell Scientific, Inc., is not responsible for problems caused by computer hardware, computer operating systems or the use of Campbell Scientific, Inc.'s software with non-Campbell Scientific, Inc. software.

All warranties of merchantability and fitness for a particular purpose are disclaimed and excluded. Campbell Scientific, Inc., shall not in any case be liable for special, incidental, consequential, indirect, or other similar damages even if Campbell Scientific, Inc., has been advised of the possibility of such damages.

Campbell Scientific, Inc., is not responsible for any costs incurred as result of lost profits or revenue, loss of use of the software, loss of data, cost of re-creating lost data, the cost of any substitute program, claims by any party other than licensee, or for other similar costs.

Licensee's sole and exclusive remedy is set forth in this limited warranty. Campbell Scientific, Inc.'s aggregate liability arising from, or relating to, this agreement or the software or documentation (regardless of the form of action; e.g., contract, tort, computer malpractice, fraud and/or otherwise) is limited to the purchase price paid by the licensee.

---

## License For Use

PC200W is copyrighted software. Campbell Scientific distributes this software free of charge to enable users to work with Campbell Scientific data acquisition equipment. PC200W may be freely copied; however, neither PC200W nor any of its files may be sold or included in any other software or altered in any way without prior permission from Campbell Scientific, Inc.

