

BMP5 Direct SDK

Software Development Kit

BMP5 Direct SDK allows users to create custom software clients that support communications with one PAKBUS® datalogger using an RS-232 or IP Port connection. This software development kit includes a simple call-level API (SimplePB.DLL) that acts as a wrapper for the included PAKBUS communications engine (coralib3d.dll).

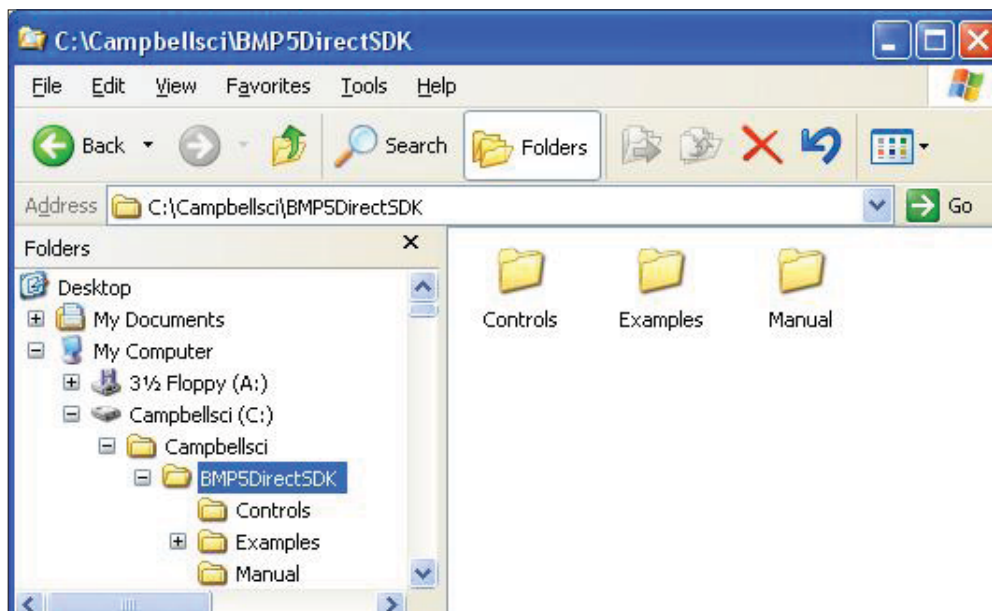
Documentation and Examples

- BMP5 Direct SDK Manual
- Visual Basic, Delphi 4, and Visual C++ examples

Requirements

The developer should be familiar with Campbell Scientific's hardware and software. The SimplePB.DLL and coralib3d.dll must be installed in the same folder. The datalogger must use the PAKBUS communications protocol (i.e., CR200-series, CR800, CR850, CR1000, or CR3000 datalogger or CR10X, CR510, or CR23X with a PAKBUS operating system).

Only one datalogger can be connected at a time. BMP5 Direct SDK can be downloaded, at no charge, at: www.campbellsci.com/downloads



Functions Supported by the SimplePB.DLL Wrapper

- | | | | |
|--------------|-----------------|----------------|------------------|
| • OpenPort | • GetValue | • GetCommaData | • GetTableNames |
| • ClosePort | • GetData | • File_Send | • GetDLLVersion |
| • OpenIPPort | • SetValue | • GetAddress | • GetLastResults |
| • GetClock | • GetData | • GetStatus | • FileControl |
| • SetClock | • GetDataHeader | | |

